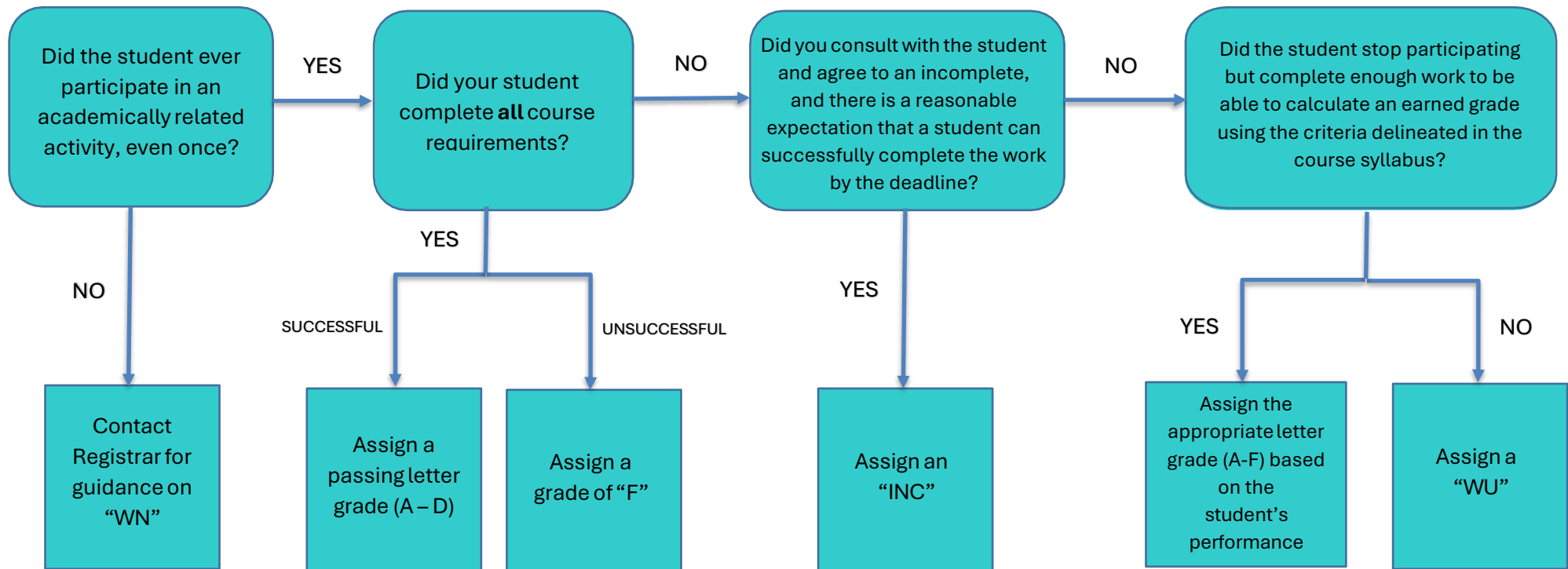


## Non-Passing Grade Road Map [WN/WU/F/INC GRADES]



### Definitions:

**WN:** A grade of "WN" is assigned to students who never participated in an academically related activity and did not officially withdraw from the class. This grade is assigned when a student is marked as "Never participated in an academically related activity" on the Verification of Enrollment (VOE) roster. **The WN Grade is not available in the final grade roster.**

**WU (Withdraw Unofficially):** A grade of WU is to be assigned to students who participated in an academic activity related to the class at least once, stopped participating, did not drop the class or receive approval for an incomplete, did not otherwise officially withdraw from the course, and did not complete enough work for the instructor to be able to calculate an earned grade using the criteria delineated in the course syllabus

**F (Failure):** F is an earned grade based on poor performance and the student not meeting the learning objectives/outcomes of the course.

**INC (Incomplete):** INC (Incomplete) should only be given by the instructor in consultation with the student when there is a reasonable expectation that a student can successfully complete the requirements of the course no later than the last day of the following semester, or its equivalent in calendar time, exclusive of Summer Session/Term. **Note:** INC is a temporary grade awarded when the disposition of the final grade requires further evaluation for reasons other than the Procedures for Imposition of Sanctions related to the Board's Academic Integrity Policy. The grade of "INC" lapses to an "FIN" grade no later than the last day of the following semester, or its equivalent in calendar time, exclusive of Summer Session/Term.