

Lehman VPN User Documentation for Windows

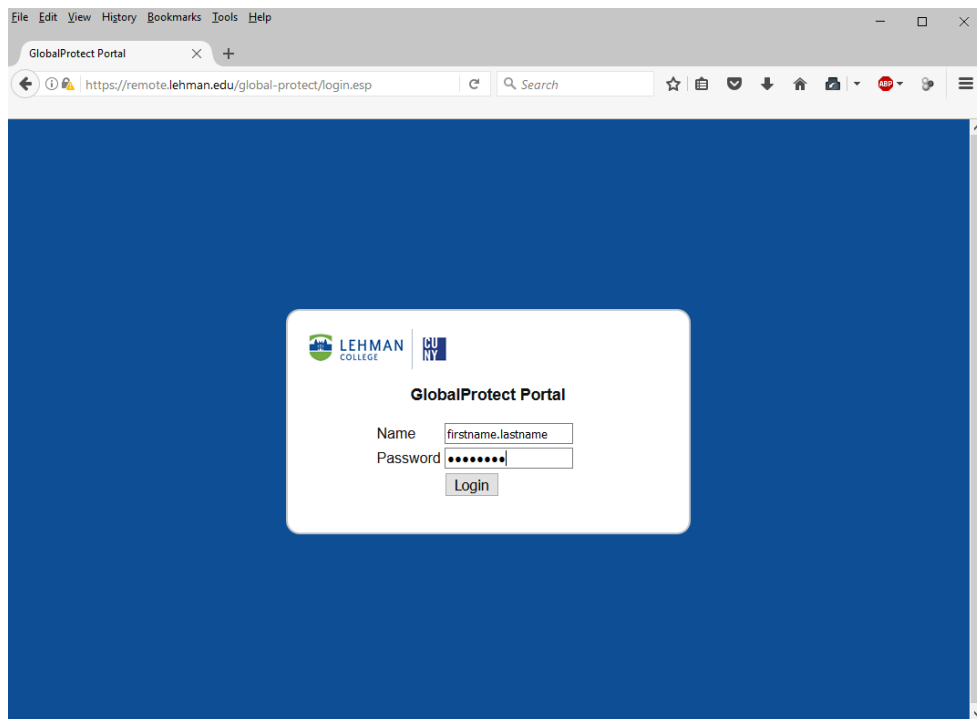
A VPN (virtual private network) allows users to securely connect to a private network from a public network. In this case Lehman faculty and staff are able to connect to the Lehman Network from anywhere. This allows them access resources that are regularly not available from off campus.

How to connect

To connect to the Lehman VPN you must download the VPN client. The VPN client can be downloaded from <https://remote.lehman.edu/>

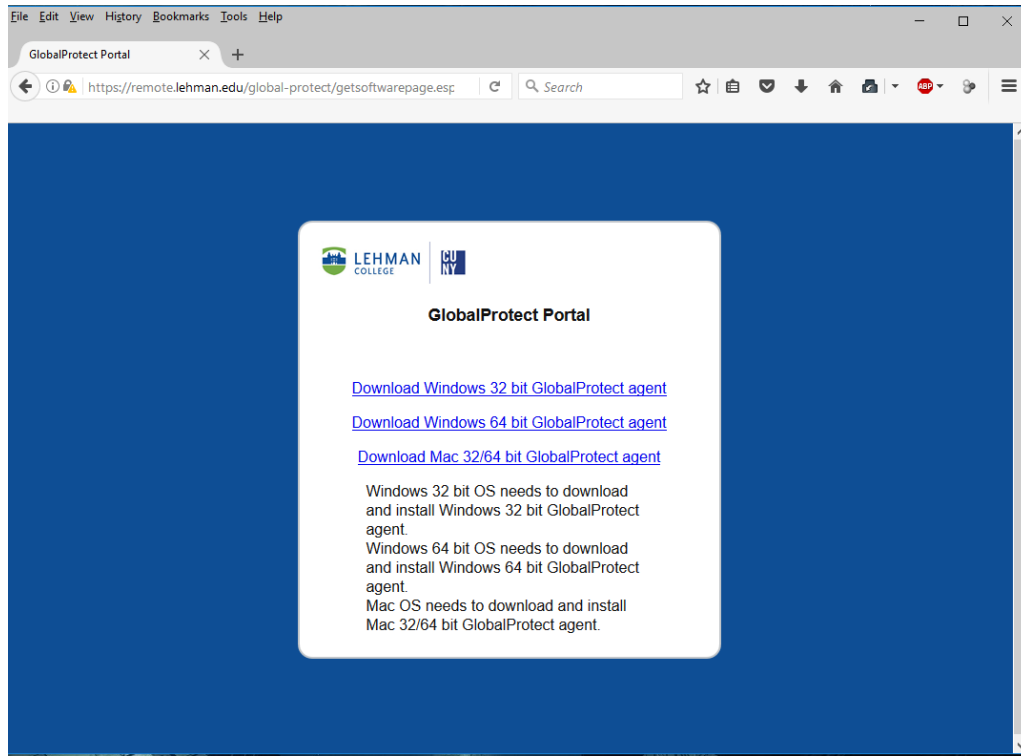
The download and installation of the VPN client only needs to be done once. If you already have the VPN client installed you may skip to step 9.

1. On any web browser navigate to <https://remote.lehman.edu/> and log in with your Lehman username and password.

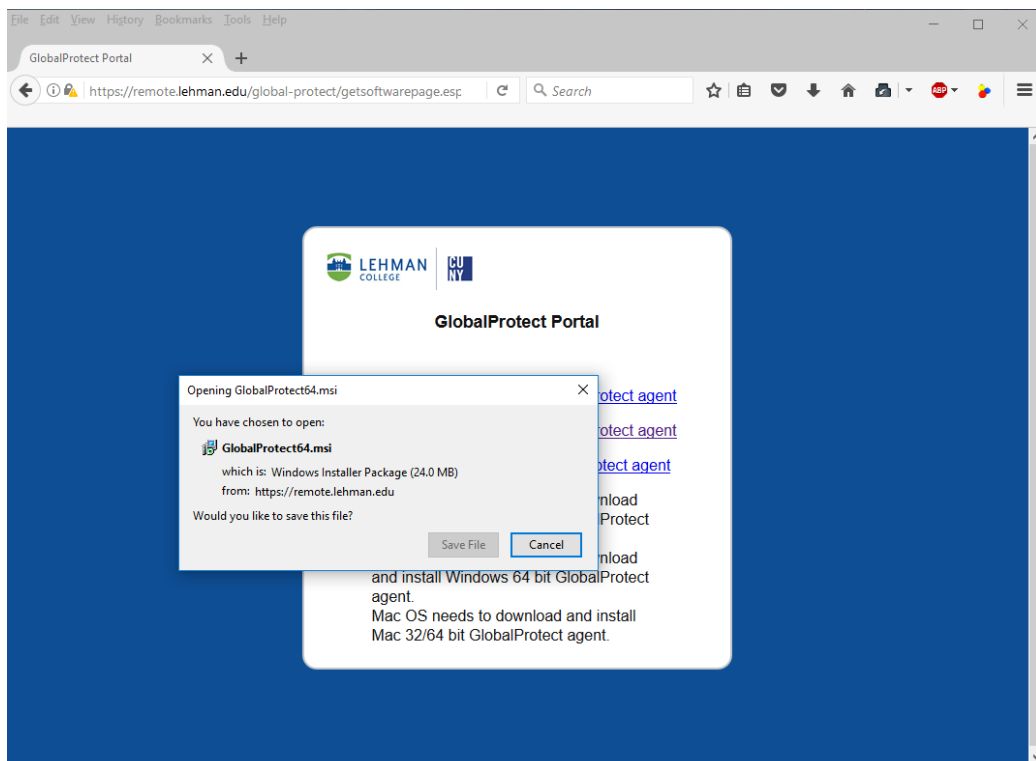


March 4, 2020

2. Once authenticated you will be presented with 3 download links. Select the link that matches with your operating system.



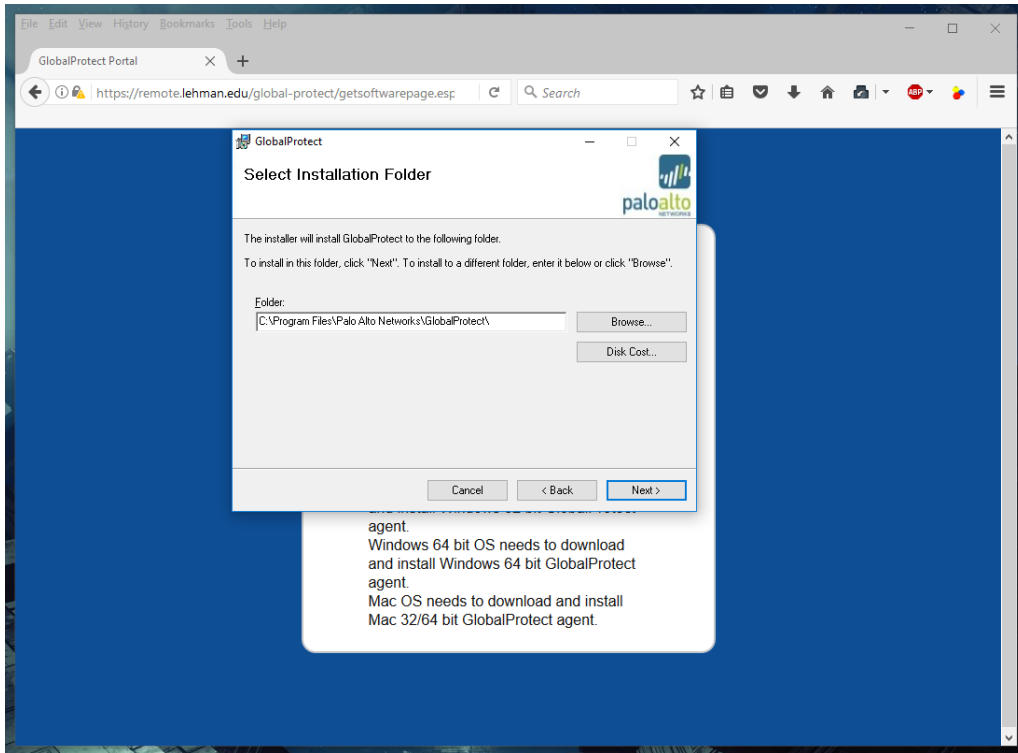
3. Click on save file to download the installer.



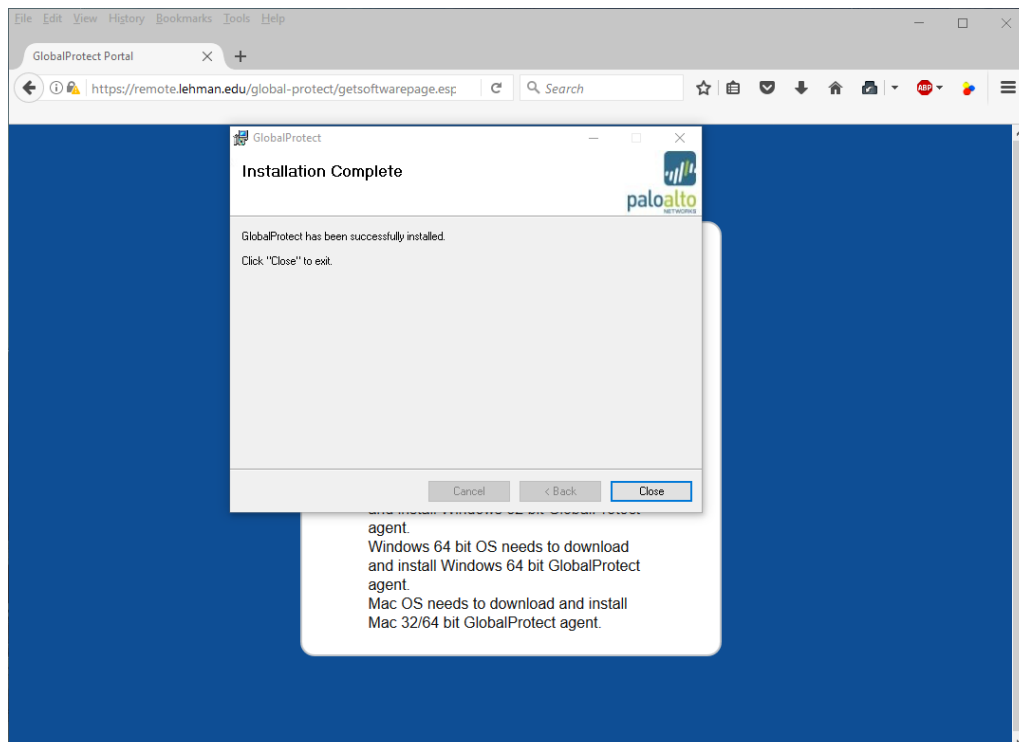
March 4, 2020

4. Once the installer downloads. Double click to install.

Note: administrative privileges are required to install the software in your computer.



5. Follow the steps in the install wizard to complete the installation.



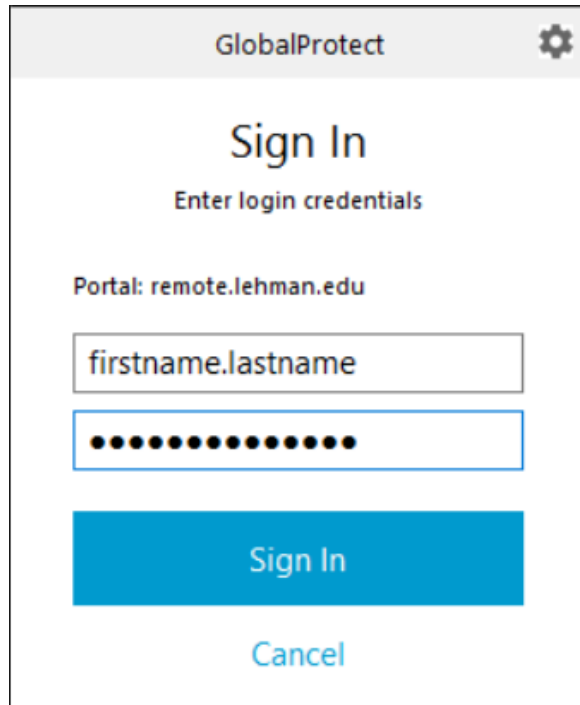
March 4, 2020

6. Once installed, the application will launch automatically. Fill in the information accordingly and click on connect.

Portal: remote.lehman.edu

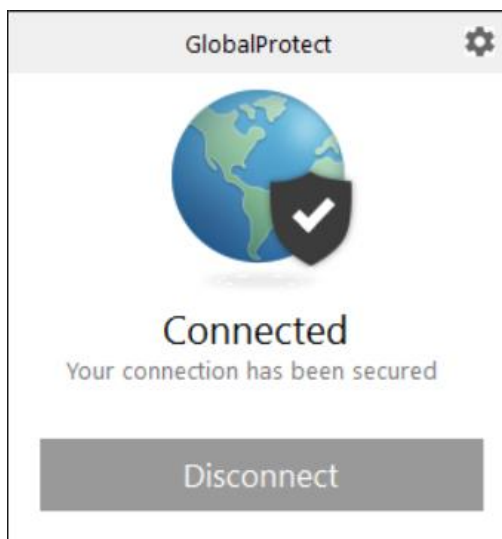
Username: Lehman username i.e. firstname.lastname

Password: Lehman password



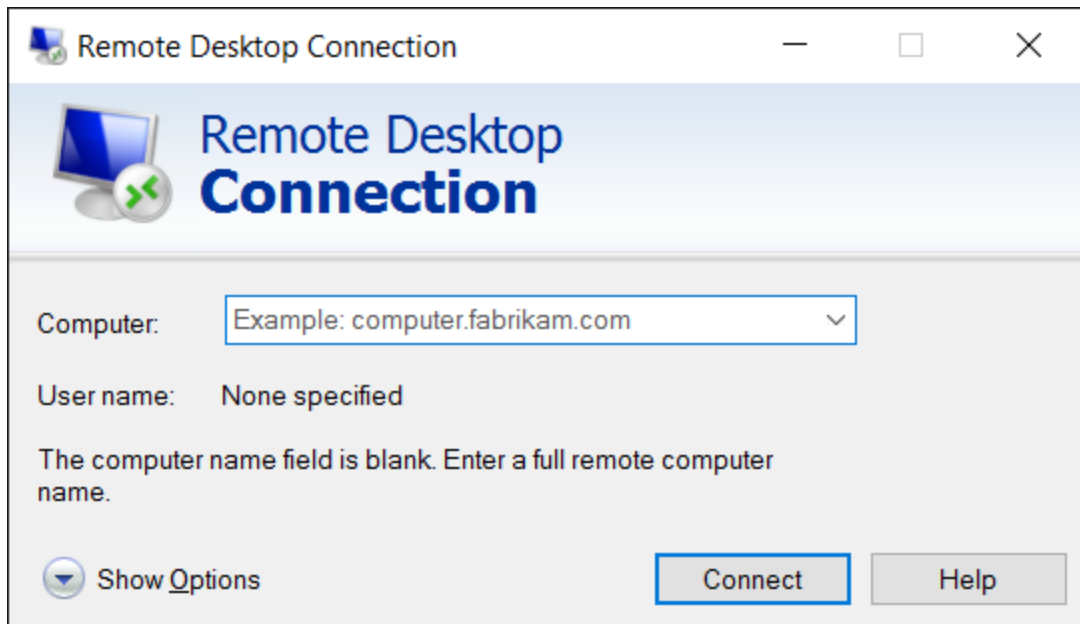
The screenshot shows a dialog box titled "GlobalProtect" with a gear icon in the top right corner. The main heading is "Sign In" with the instruction "Enter login credentials" below it. The "Portal" field is pre-filled with "remote.lehman.edu". There are two input fields: the first contains the placeholder text "firstname.lastname", and the second is a password field with 12 black dots. Below the input fields are two buttons: a blue "Sign In" button and a light blue "Cancel" button.

7. If the connection is successful the status will say "Connected" as displayed below. At this point you should be able to access Lehman resources just as if you were on campus.



8. Open remote Desktop Connection and type in your IP address and click Connect.

March 4, 2020



Please contact the IT Center Help Desk (Carman Hall 108 or (718) 960-1111 or help.desk@Lehman.cuny.edu if further assistance is needed.