

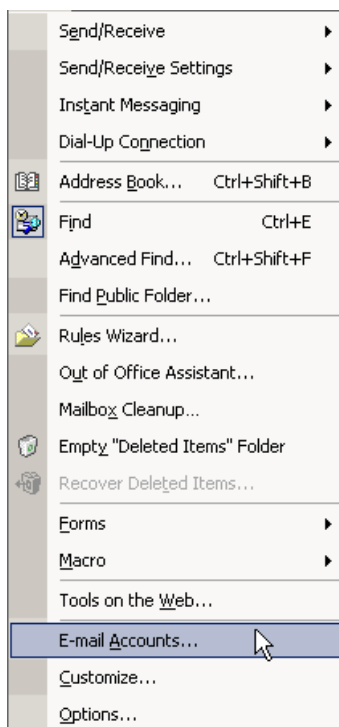
Outlook IMAP Setup for CUNY Oracle E-mail

These instructions show how to configure Microsoft Outlook XP (Outlook 2002) to work with the **CUNY Oracle E-mail** system.

- Outlook is not Outlook Express. We have separate instructions for [Outlook Express](#).

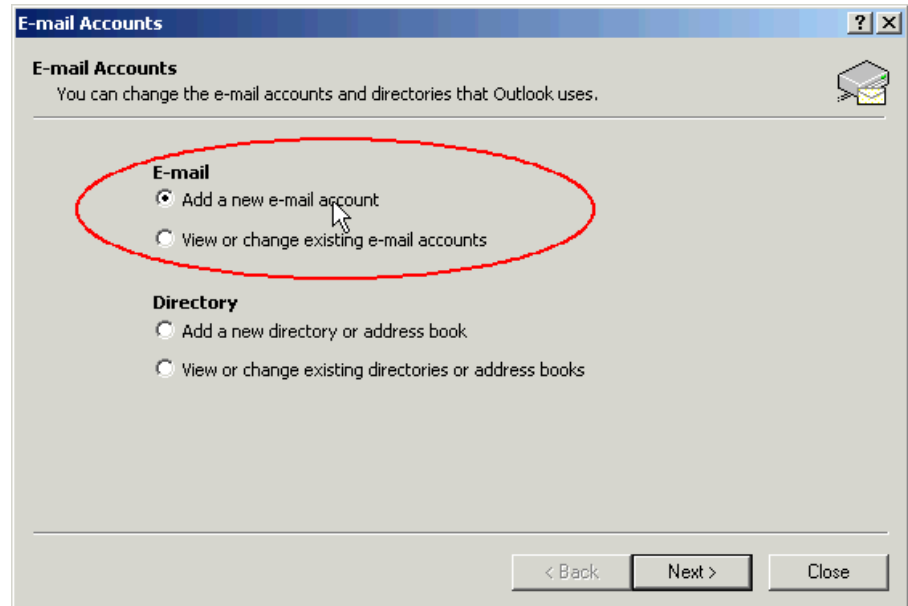
Start Microsoft Outlook 2002.

From the **Tools** menu, select **Email Accounts**.



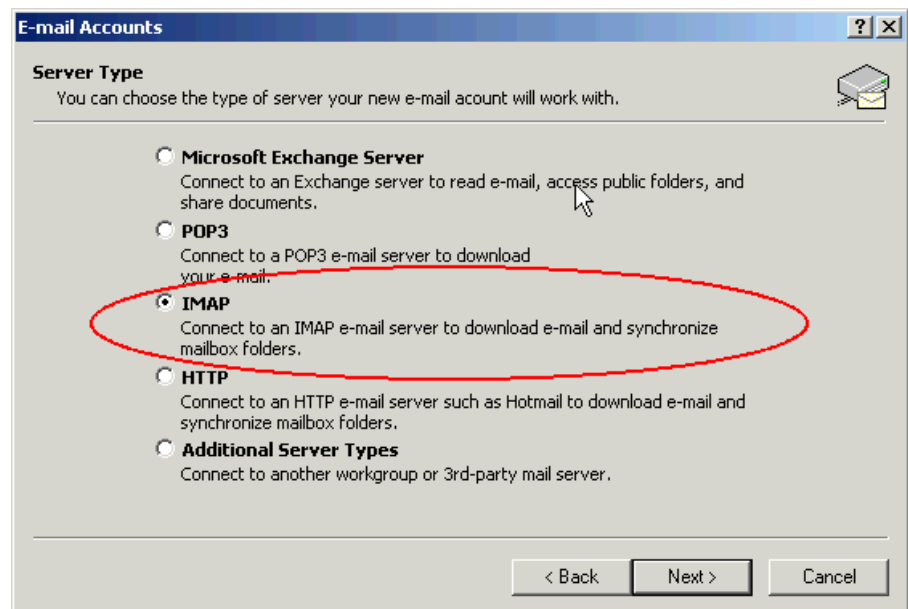
Click **Add a new e-mail account.**

Click **Next.**



Select **IMAP.**

Click **Next.**



User Information

Your name: This is how your name will appear on mail you send.

E-mail Address: Enter your **new** e-mail address:

firstname.lastname@lehman.cuny.edu

Server Information

Incoming mail server (IMAP):
Enter *ocsimap.cuny.edu*

Outgoing mail (SMTP) server:
Enter *ocssmtp.cuny.edu*

Logon Information

User Name:

Enter
firstname.lastname@lehman.cuny.edu

Password: Enter your Oracle E-mail password.

Remember password: Check this box and you won't be prompted each time you start Outlook. When you change your password on the system, remember to come back here to change it to match.

Log on using Secure Password Authentication: Leave this blank.

Click **More Settings** to continue.

This opens the **Internet Email** dialog.

On the General tab:

Give your account a meaningful name.

Organization: Enter CUNY on the Concourse [Optional]

The screenshot shows the 'E-mail Accounts' dialog box with the 'Internet E-mail Settings (IMAP)' tab selected. The dialog has a title bar with a question mark and a close button. Below the title bar is a subtitle 'Internet E-mail Settings (IMAP)' and a note: 'Each of these settings is required to get your e-mail account working.' The dialog is divided into three sections: 'User Information', 'Server Information', and 'Logon Information'. In 'User Information', 'Your Name' is 'Gary Kettner' and 'E-mail Address' is 'gary.kettner@lehman.cuny'. In 'Server Information', 'Incoming mail server (IMAP)' is 'ocsimap.cuny.edu' and 'Outgoing mail server (SMTP)' is 'ocssmtp.cuny.edu'. In 'Logon Information', 'User Name' is 'gary.kettner@lehman.cuny', 'Password' is masked with asterisks, and the 'Remember password' checkbox is checked. There is also an unchecked checkbox for 'Log on using Secure Password Authentication (SPA)'. A 'More Settings ...' button is at the bottom right. At the very bottom are '< Back', 'Next >', and 'Cancel' buttons.

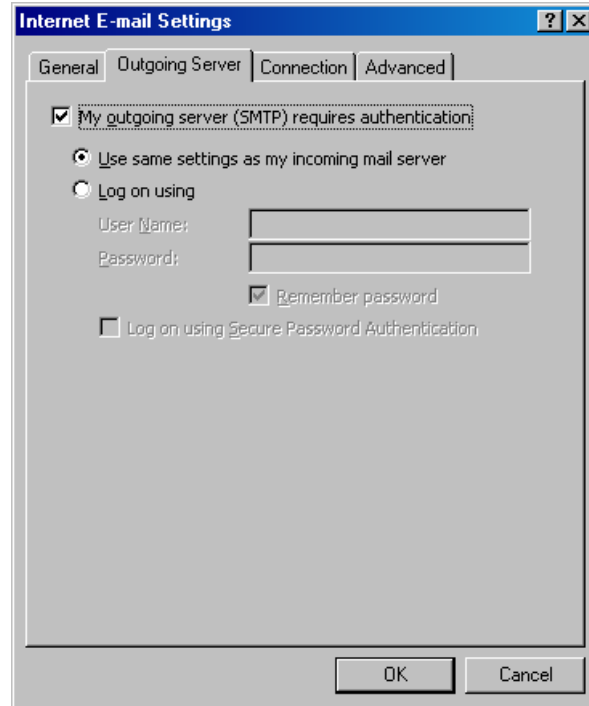
The screenshot shows the 'Internet E-mail Settings' dialog box with the 'General' tab selected. The dialog has a title bar with a question mark and a close button. Below the title bar are tabs for 'General', 'Outgoing Server', 'Connection', and 'Advanced'. The 'General' tab contains two sections: 'Mail Account' and 'Other User Information'. In 'Mail Account', there is a text box with the value 'Oracle E-mail' and a note: 'Type the name by which you would like to refer to this account. For example: "Work" or "Microsoft Mail Server"'. In 'Other User Information', there is an 'Organization' text box with the value 'CUNY on the Concourse' and a 'Reply E-mail' text box which is empty. At the bottom are 'OK' and 'Cancel' buttons.

Click on the **Outgoing Server** tab.

Check

My outgoing server (SMTP) requires authentication

Select **Use same settings as my incoming mail server**



Click **OK** to complete the configuration.

Click **Next**, then **Finish** to complete the **Email Accounts** dialog.

If you need assistance using Outlook, take advantage of its excellent built-in help system. Press **F1** or click **Help** on the main menu.